

# IRI 1001

*The Affordable Thermal Imager*



## Features

- Low Cost
- Temperature Measurement
- Multiple Image Storage
- One Hand Operation
- Light Weight
- Un-Cooled
- Long Wavelength
- Simple Operation
- Voice Recording
- Laser Pointer
- Microsoft® Compatible

## Applications

- Predictive Maintenance
- Energy Conservation
- Process Monitoring
- Healthcare
- Research and Development

## SPECIFICATION

### PERFORMANCE

Temperature range :	-20°C to +90°C (up to 150°C with reduced accuracy)
High temperature option :	600°C (up to 1000°C with reduced accuracy)
Field of view:	20° x 20° (Optional 10° x 10°)
Special Response :	8 to 14 micrometers
Temperature sensitivity :	-0.5K @ 30°C
Temperature readout :	all pixels via Movable cursor
Displayed image:	up to 128 x 128 pixels
Detector :	16 x 16 pixel array
Frame Integration :	up to ten frames
Frame rate :	6Hz.

### LASER POINTER

A built in Class 2 laser is supplied to highlight the reference pixels.

### IMAGER POWER SUPPLY

Battery :	Included.
Battery life imager :	≥ 8 hrs.
Charger :	Supplied.

### SETTINGS AND CONTROLS

Power on/off switch on imager box.

All functional controls set via dialogue boxes on computer :

- User selectable sensitivity settings.
- User selectable temperature offset control (Range).
- User defined emissivity values.
- Pixel integration options to improve the temperature sensitivity.
- Image display may be selected to be in a variety of colours or greyscale.
- User selectable spatial interpolation to improve visual presentation of data.

### COMPUTER INTERFACE

2m cable for connection to PC serial port is supplied.

### MECHANIAL

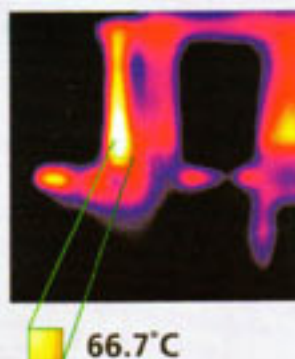
Housing:	Die-cast aluminium box
Dimensions :	100mm x 100mm x 60mm (excluding handle)
Weight :	≤ 1.3kg including battery
Mounting :	Handheld and tripod mount

### FEATURES

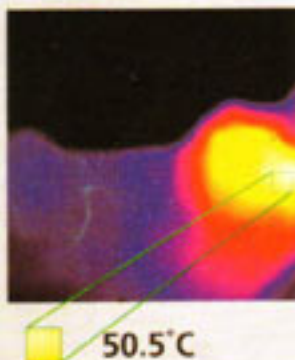
- Multiple image storage and retrieval capability.
- Temperature data logging.
- Image browser.
- Readout in °C, °F or K.
- Battery charge indicator - Pocket PC.
- Pocket PC controlled by direct navigation / action buttons.

### OPTIONS

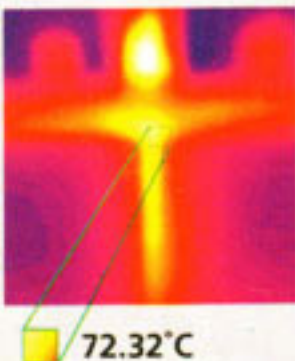
- Light shade for operation in bright sun light.
- Extension Lead : Imager to Pocket PC.



Electrical: Termination problem on yellow phase



Mechanical: Overheating bearing at pulley end



Energy: Leaking oven door seal

Specifications are subject to change without notice

### ENVIRONMENT (IMAGER)

IP rating :	52 (doesn not include Compaq iPAQ)	Humidity :	10% to 95% non condensing
Temp. operating range :	-5°C to + 50°C	CE Mark :	Complies with EMC directive
Temp. storage range :	-20°C to +80°C		